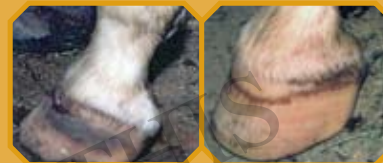




Applied Common SenseSM

HOOFTM

Pelleted Nutritional Hoof Supplement
For All Classes of Horses



GUARANTEED ANALYSIS

Crude Protein	(min).....	15.0 %	Calcium (Ca)	(min).....	1.5 %	Copper (Cu)	(min).....	500 PPM
Methionine	(min).....	1.8 %	Calcium (Ca)	(max).....	2.0 %	Zinc (Zn)	(min).....	1,000 PPM
Crude Fat	(min).....	2.5 %	Phosphorus (P)	(min).....	0.5 %	Biotin	(min).....	120 MG/LB
Crude Fiber	(max).....	8.0 %				Vitamin A	(min).....	2,000 IU/LB

INGREDIENTS:

Organic Oat Groats, Lactobacillus Acidophilus Fermentation Product, Organic Steam Rolled Barley, Organic Dehydrated Alfalfa Meal, Organic Full Fat Soybeans, Organic Linseed Meal, Organic Rice Bran, Stabilized Flax, Calcium Carbonate, Dicalcium Phosphate, DL-Methionine, Organic Dried Kelp, Biotin, Sodium Sulfate, Ferric Choline Citrate, Vitamin A Acetate, Magnesium Oxide, Vitamin D₃ Supplement, Natural Source Vitamin E (d-alpha tocopheryl acetate), Calcium Pantothenate, Monosodium Phosphate, Sodium Bentonite, Niacin Supplement, Ferrous Fumarate, Cobalt Choline Citrate Complex, Copper Choline Citrate Complex, Yeast Culture, Choline Chloride, Pyridoxine Hydrochloride, Ascorbic Acid (A Preservative), Diatomaceous Earth, Riboflavin, Vitamin B₁₂ Supplement, Lecithin, Carotene, Dried Tomato Pomace, Rice Hulls, Potassium Iodide, L-Lysine, Organic Vinegar, Folic Acid, Thiamine, Algae Meal, Manganous Oxide, Citric Acid (A Preservative), Zinc Methionine Complex, Organic Soybean Oil, Potassium Amino Acid Complex, Magnesium Amino Acid Chelate, Zinc Amino Acid Chelate, Manganese Amino Acid Chelate, Copper Amino Acid Chelate, Potassium Chloride, Magnesium Sulfate, Potassium Sulfate, Zinc Sulfate, Copper Sulfate, Ferric Sulfate, Manganese Sulfate, Dried Aspergillus Niger Fermentation Soluble, Dried Aspergillus Oryzae Fermentation Soluble, Dried Bacillus Subtilis Fermentation Soluble, Bifidobacterium Bifidum, Lactobacillus Plantarum, Enterococcus Faecium, Lactobacillus Acidophilus.

**Now Made With
Organic Grains!**

DIRECTIONS for Horses:

Initial Application: Feed 1 level scoop twice daily with feed (4 oz/day).

Maintenance Application: Feed 1/2 scoop twice daily with feed (2 oz/day).

Manufactured for:

Advanced Biological Concepts, • 301 Main St. • P.O. Box 27 • Osco, Illinois 61274-0027
(USA) 800-373-5971 • (Local) 309-522-5505 • (Canada) 800-779-3959 • (Fax) 309-522-5526

Heliter@a-b-c-plus.com • www.abcpus.biz

PD436-3

90425BKT

Net Weight 25 Pounds (11.36 kg) (200 day supply)

Disclaimer: Advanced Biological Concepts® accepts no responsibility for the performance, failure or misuse of this product or changes of protocol that we are not aware of.